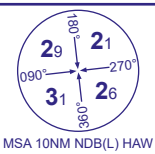
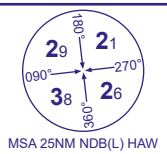


INSTRUMENT DEPARTURE CHART - ICAO

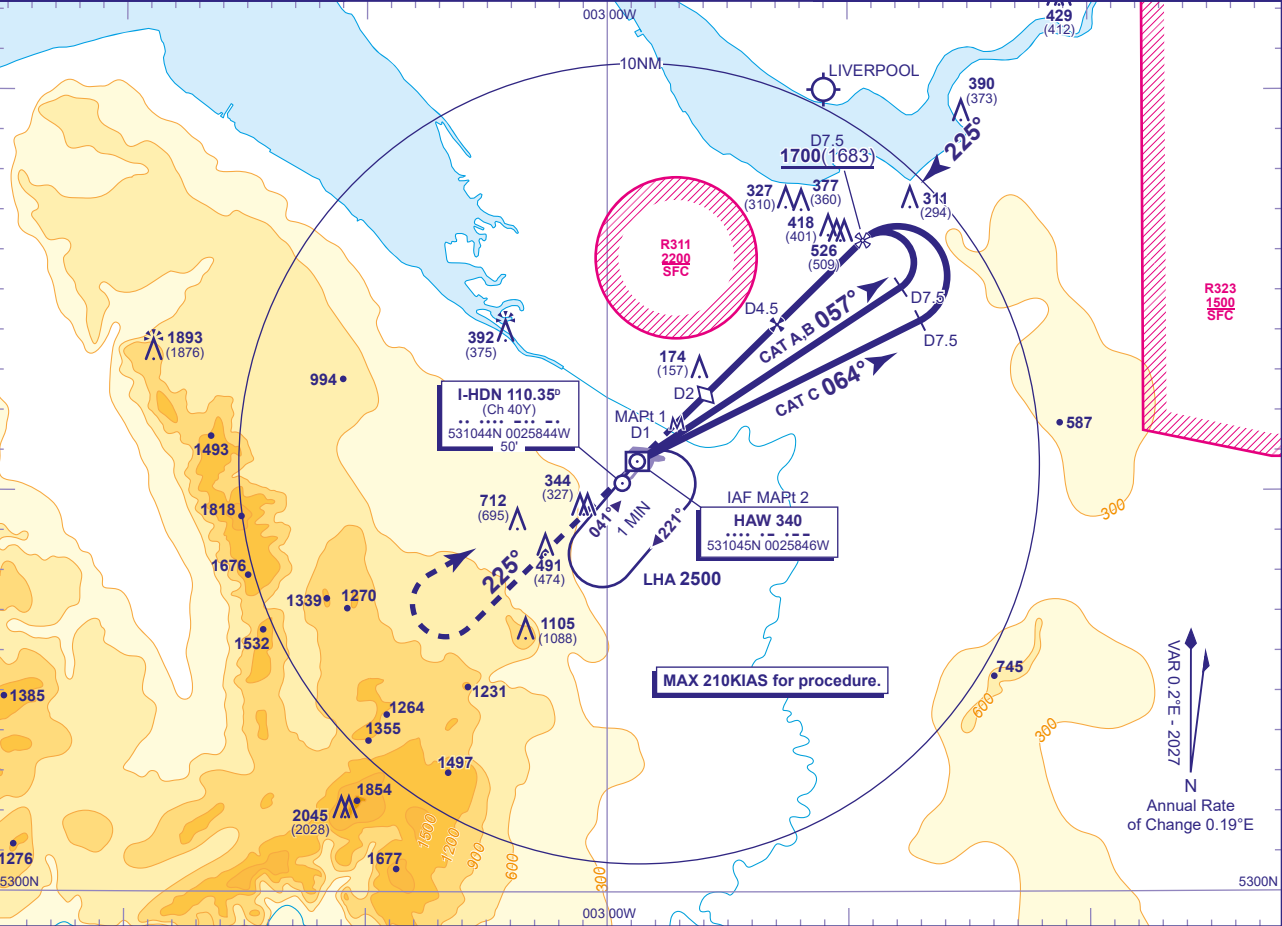
HAWARDEN
NDB(L)/DME
RWY 22
(ACFT CAT A,B,C)



TWR 124.955	HAWARDEN TOWER
RAD 120.055, 130.015*	HAWARDEN RADAR
ATIS 125.430	HAWARDEN INFORMATION
*As directed by ATC, Not continuously monitored	

AD ELEVATION	45
THR ELEVATION	17
OBSTACLE ELEVATION	2045 AMSL (2028) (ABOVE THR)
BEARINGS ARE MAGNETIC	

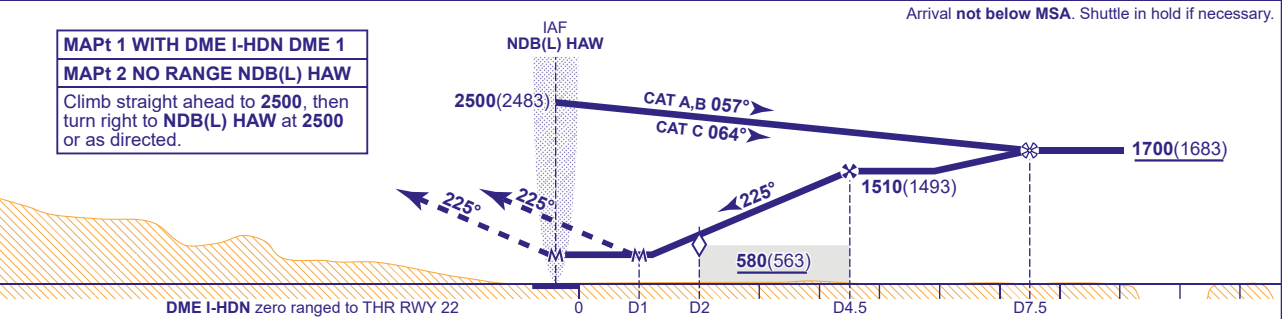
TRANSITION ALTITUDE	5000
---------------------	------



RECOMMENDED PROFILE Gradient 5.2%, 320FT/NM

DME I-HDN	4	3	2 (SDF)
ALT(HGT)	1350(1333)	1030(1013)	710(693)

MAPt 1 WITH DME I-HDN DME 1
MAPt 2 NO RANGE NDB(L) HAW
Climb straight ahead to 2500, then turn right to NDB(L) HAW at 2500 or as directed.



Aircraft Category		A	B	C	Rate of descent	G/S KT	160	140	120	100	80
OCA (OCH)	With DME 2.5% Climb	500(483)	500(483)	500(483)		FT/MIN	860	750	640	530	430
	With DME 3% Climb	450(433)	450(433)	450(433)							
	Radar range only	640(623)	640(623)	640(623)							
	No DME or radar range	830(813)	830(813)	830(813)							
VM(C)OCA (OCH AAL)	Total Area	800(755)	900(855)								
	East of RWY 04/22	700(655)	800(755)	1500(1455)							

AIRCRAFT UNABLE TO RECEIVE DME I-HDN
Advise ATC. Subject to ATC approval, radar ranges will be provided at 7.5NM outbound and at 4.5NM inbound.

AIRCRAFT UNABLE TO RECEIVE RANGE INFORMATION
CAT A fly outbound for 3 MIN, CAT B 2.5 MIN and CAT C 2 MIN.

NOTE FAT is offset 4° from RWY C/L and crosses RWY C/L nominally 0.75NM before THR.

CHANGE (11/25): MSA INCREASES 25NM SE/SW QUADRANT, 10NM SE QUADRANT. IF ALTITUDE ON PROFILE. MOCA ALTITUDE. MAG VAR. MAG TRACKS.